



Product Data Sheet

Dual End Combination Press

Model DCP-400/600

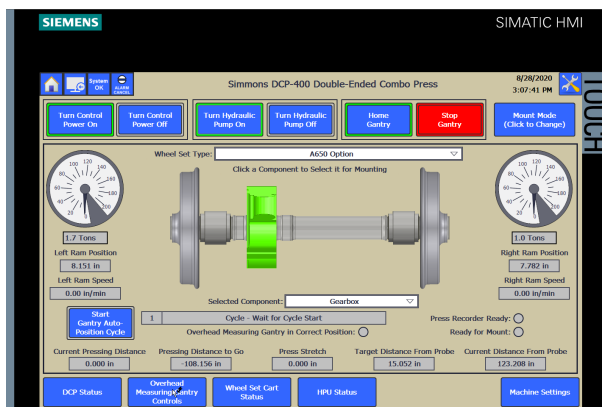
smtgroup.com
(518) 462-5431



The **Simmons DCP-400/600 Dual End Combination Press** mounts and demounts wheels, bearings, gearboxes, and other railway wheel set components. Its versatility eliminates the need for multiple machines. The press offers the freedom to control pressing speed and tonnage while also providing rapid extend/retract traverse speeds, allowing for the fastest possible setup and breakdown time in between pressing operations. All tooling is specialized and easily exchanged to safely accommodate a large variety of wheel set components and configurations. Installation is straightforward, as the press is flat-floor-mounted – no civil work is required. The on-demand hydraulic power unit provides maximum energy efficiency and reduced noise. The press is available as a 600 ton pressing force model or a derated 400 ton system for customers with lower capacity requirements.

Wheel set components can be loaded and unloaded with the aid of an optional overhead crane system and wheel set handling cart. The wheel set is held between centers throughout mounting and demounting operations. Both the swing-in yoke and abutments are positioned under power. A precision wheel press recorder captures the mount force versus distance graph, storing the data along with wheel set information entered by the operator in accordance with AAR, APTA, and other international standards. The optional overhead measuring system monitors the position of the gearbox, wheels, and other components as needed. The press' controls are intuitive for safe and efficient operation.

Press operation rates are variable due to the variety of wheel sets that can be processed. Rates can range from 8 – 32 wheel sets per 8-hour shift depending on wheel set complexity and the number of components and operations necessary per wheel set. The press can move to position within a 0.020 inch or 500 micron accuracy.



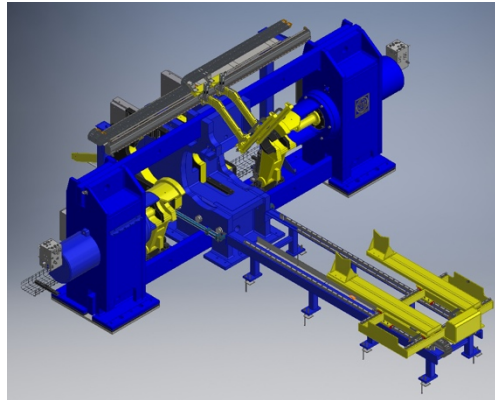


Product Data Sheet

Dual End Combination Press

Model DCP-400/600

smtgroup.com
(518) 462-5431



Machine Dimensions

Press Length	287.3 in.	7297 mm
Press Width	123 in.	3124 mm
Press Height	88.5 in.	2248 mm
Total Weight (Including HPU)	64000 lbs.	29000 kg
Vertical Distance Between Tie Bars	60 in.	1524 mm
Ram Stroke	36 in.	914 mm
Max. Opening Between Ram Faces (Without Tools)	148 in.	3759 mm
Max. Opening Between Ram Faces (With Standard Tools)	116 in.	2946 mm

General Specifications

Production	8-32 wheel sets per 8-hour shift (depending on wheel set complexity)	
Accuracy	+/- 0.020 in.	+/- 500 microns
DCP-600 Maximum Pressing Force	600 tons	5330 kN
DCP-400 Maximum Pressing Force	400 tons	3558 kN
Rapid Ram Extend Speed	120 in/min	50 mm/s
Rapid Ram Retract Speed	140 in/min	60 mm/s
Maximum Pressing Speed	11 in/min	4.5 mm/s

Utility Requirements

Electrical Power	60 kW
------------------	-------

Wheel Set Dimensions

Maximum Wheel Diameter	52 in.	1320 mm
Minimum Wheel Diameter	24 in.	600 mm
Maximum Axle Length	102 in.	2590 mm
Maximum Axle Diameter	10.5 in.	265 mm

Updated December 15, 2020